

MR1 PULSER

12 VDC INSTALLATION INSTRUCTIONS
For Dresser Wayne model 700R registers
For MR1 Models MR1-12-SO-A and MR1-12-DO-A

The MR1 Pulser was designed to operate with the Dresser Wayne 700R series meter-registers. It will generate an output of 10 pulses per gallon. No switch or jumper settings are required.

1. Remove the cover of the register.
1. Remove the reset knob on the left side by pulling it firmly.
2. Remove the register from the housing by unscrewing the Philips screws at either side of the register.
3. Starting from the bottom of the register, slide the pulser head along the lower right side until the slot in the pulser head is aligned with the register mounting screw. The black optical sensor should fit into the slot on the register's right side. See Fig. 2 for the correct orientation.
4. Holding the pulser head and register in position, lower the register into the housing, Install the original register screw into the left side of the register. Install the longer screw provided with the pulser into the right side of the register. Hold the pulser head in the correct position and tighten.
5. Use a drill or a round file to make a notch in the register housing for the pulser head wire.
6. Mount the pulser barrier and connect the wires as shown in Fig. 3. The pulser should be wired so that power is applied only when the handle switch is on. Note that the pulse output is a contact closure type, and the red wires (and blue wires for dual output models) are not polarity sensitive.
7. Installation of the pulser is now complete. Run a test transaction and make sure that the pulse output is correct. If there is no output, make sure that sunlight is not shining directly on the pulser's optical sensor.

Specifications:

Operating Temperature Range: -40 to 150 degrees F.
 Input Voltage Range: 10 to 15 Volts DC
 Pulser Output Voltage Range: 5 to 350 Volts AC or DC
 Maximum Speed 50 GPM

Integrated Control Systems Inc.
 1425 American Way, Cedar Hill, TX. 75104
 (972) 291-6064
 (972) 291-5975
WWW.INTCONSYS.COM



Fig. 1

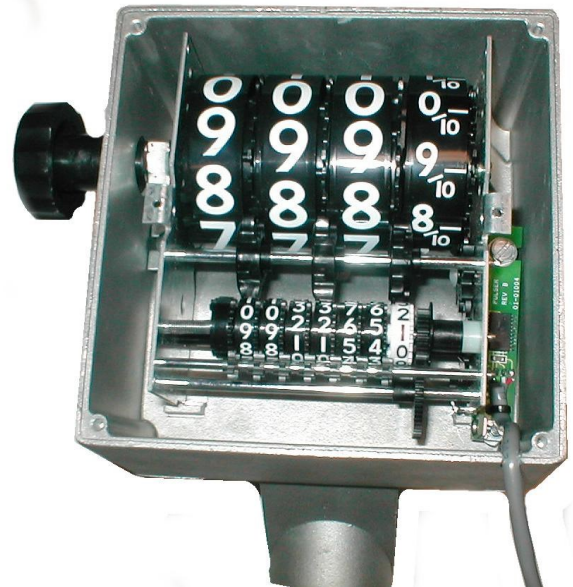


Fig. 2

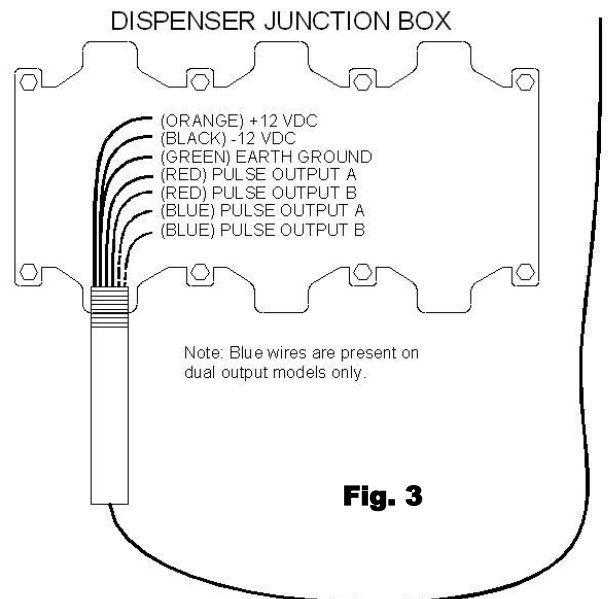


Fig. 3

PULSER INSTALLATION IMPORTANT NOTICE

When installing the pulser barrier in the open (outside of a pump or dispenser cabinet), be sure to mount the barrier with the head wire facing downward as shown in the diagram at right.

Make a small loop in the head wire as shown, and tie-wrap the head wire to the barrier.

This configuration will prevent water from running down the head wire and collecting on the barrier seal.

