

# MR1 PULSER

## 110 VAC INSTALLATION INSTRUCTIONS

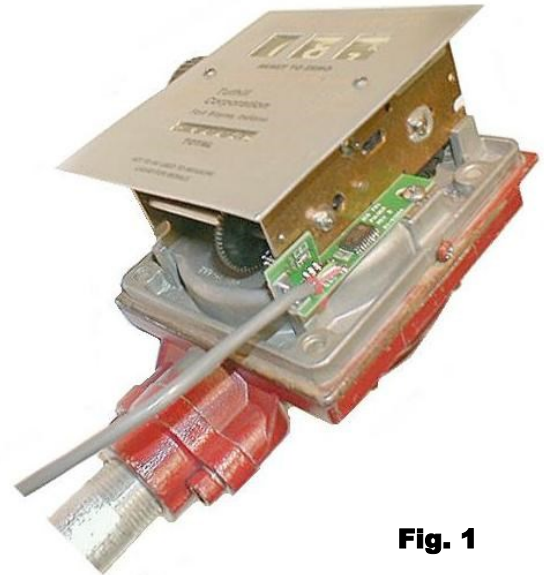
For FillRite 800 and 900 series registers

For MR1 Models MR1-110-SO-A and MR1-110-DO-A

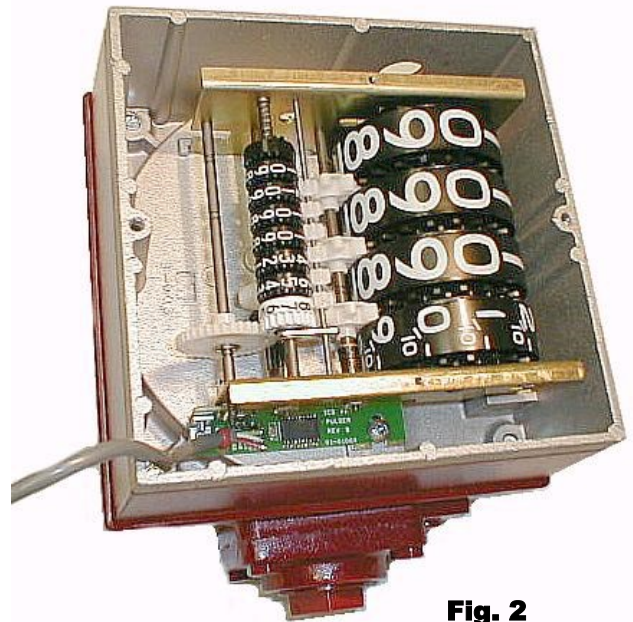
The MR1 Pulser was designed to operate with the Fill Rite © 800 and 900 series meter-registers. It will generate an output of 10 pulses per gallon. No switch or jumper settings are required.

**Note:** There are several variations of these meter-registers. Installation may vary slightly depending on these variations.

1. Remove the cover of the register.
2. Remove the register from the housing by unscrewing the Phillips screws at either side of the register.
3. Starting from the bottom of the register, slide the pulser head along the right side until the slot in the pulser head is aligned with the register mounting screw. The optical sensor should fit into the slot on the register's right side. See Fig. 1 and Fig. 2 for 800 and 900 series registers respectively.
4. Holding the pulser head and register in position, attach the Phillips screws into the casting and tighten.
5. Use a drill or a round file to make a notch in the register housing for the pulser head wire.
6. Mount the barrier and connect the wires as shown in Fig. 3. The pulser should be wired so that power is applied only when the handle switch is on. Note that the pulse output is a contact closure type, and the red wires (and blue wires for dual output models) are not polarity sensitive.
7. Installation of the pulser is now complete. Run a test transaction and make sure that the pulse output is correct. If there is no output, make sure that sunlight is not shining directly on the pulser's optical sensor.



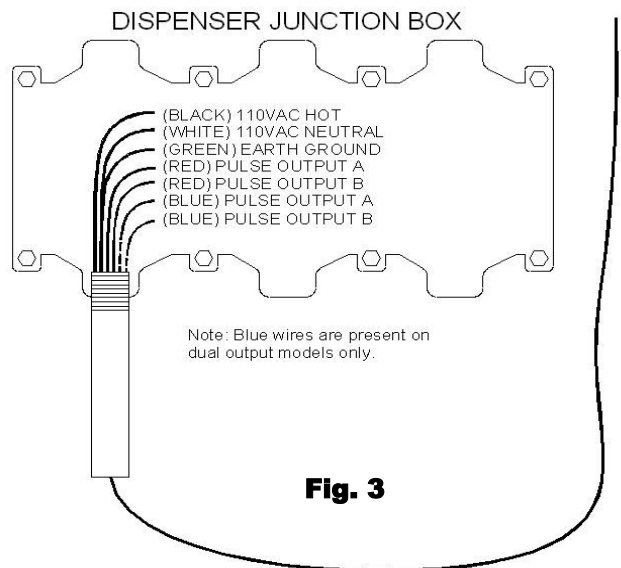
**Fig. 1**



**Fig. 2**

### Specifications:

Operating Temperature Range: -40 to 150 degrees F.  
Input Voltage Range: 70 to 150 Volts AC  
Pulser Output Voltage Range: 5 to 350 Volts AC or DC  
Maximum Speed 50 GPM



**Fig. 3**

**Integrated Control Systems Inc.**  
1425 American Way, Cedar Hill, TX. 75104  
(972) 291-6064  
(972) 291-5975  
[WWW.INTCONSY.COM](http://WWW.INTCONSY.COM)

# PULSER INSTALLATION IMPORTANT NOTICE

When installing the pulser barrier in the open (outside of a pump or dispenser cabinet), be sure to mount the barrier with the head wire facing downward as shown in the diagram at right.

Make a small loop in the head wire as shown, and tie-wrap the head wire to the barrier.

This configuration will prevent water from running down the head wire and collecting on the barrier seal.

